



Index chapter 8

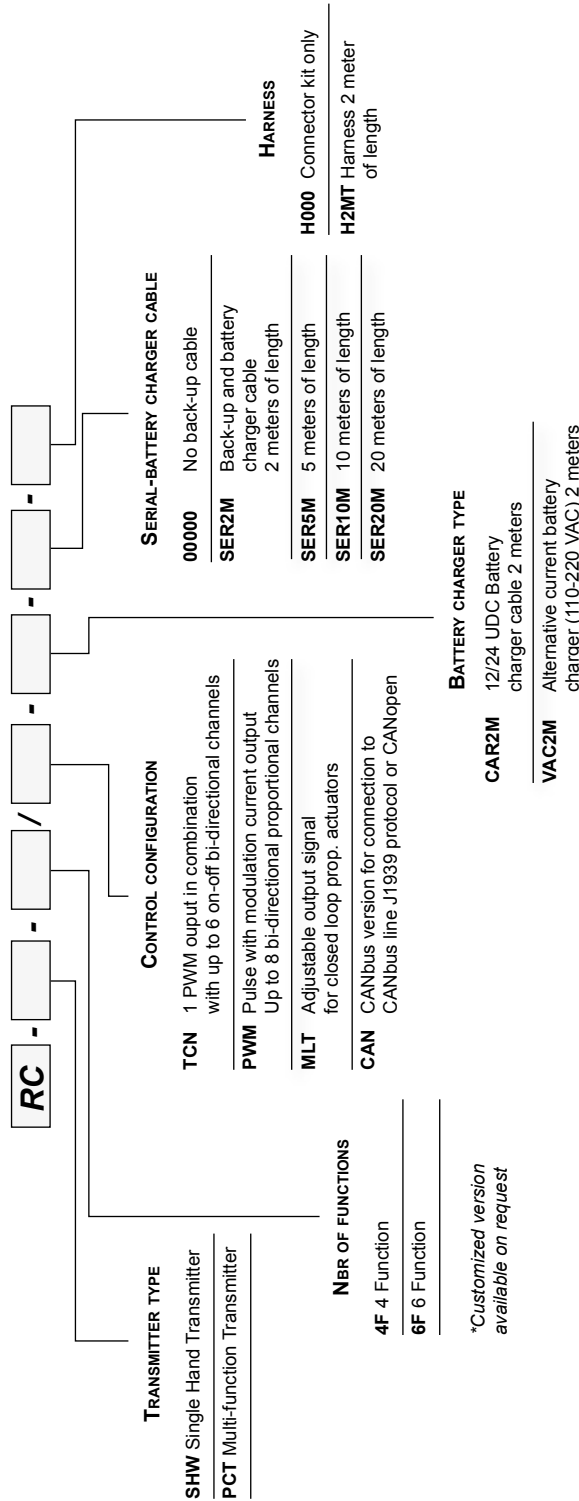
Section / Description	page
4-FUNCTIONS PCT RADIO TRANSMITTER	4
6-FUNCTIONS PCT RADIO TRANSMITTER	5
4/6 FUNCTIONS SHW RADIO TRANSMITTER	6
CANBUS RADIO RECEIVER	7
APPLICATION EXAMPLE	8
ACCESSORIES	10

WARNING: the specifications/application data shown in our catalogs and data sheets are intended only as a general guide for the product described (herein). Any specific application should not be undertaken without independent study, evaluation, and testing for suitability.

Description	Technical information page
4-Functions PCT Radio Transmitter	4
6-Functions PCT Radio Transmitter	5
4/6 Functions SHW Radio Transmitter	6
CANbus Radio Receiver	7

WARNING: the specifications/application data shown in our catalogs and data sheets are intended only as a general guide for the product described (herein). Any specific application should not be undertaken without independent study, evaluation, and testing for suitability.

Radio Remote System Ordering Information



WARNING: the specifications/application data shown in our catalogs and data sheets are intended only as a general guide for the product described (herein). Any specific application should not be undertaken without independent study, evaluation, and testing for suitability.

RC-PCT-4F 4-Functions PCT Radio Transmitter

DESCRIPTION

Compact multi-function shoulder strap radio remote controller, for use with Tecnord RC-TRL radio receivers / transceivers. Four proportional paddle levers (JLP type) and toggle switches for auxiliary functions.

RC-PCT radio remote controller is designed to allow remote operation of machines. It is best suited for machines equipped with a CAN-based control system.

Its multi-function structure allows simultaneous operation of all the available functions.

RC-PCT-4F Compact Controller is equipped with 4 proportional paddle levers (Tecnord JLP type).

Additional operators are available for radio enable, reduced speed selection and auxiliary functions.

A STOP pushbutton is available to immediately stop the machine in case of hazard.

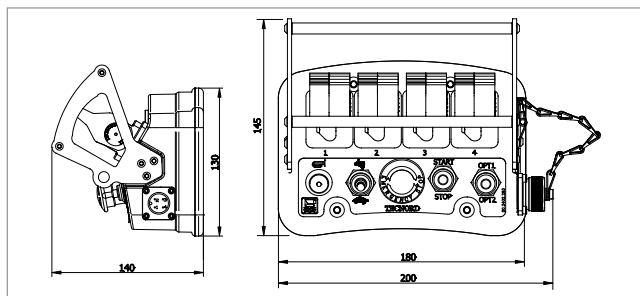
Battery and battery charger are internal; a connector is provided for battery charging and backup cable communication.

The transmission technology used allows high immunity to interference and long operating range. Co-existence between multiple RC-PCT units is also allowed.

A unique code allows the RC-PCT controller to operate only with its coupled radio receiver.

FEATURES

- Battery power supply: NiMH rechargeable cells.
- Cable power supply: from vehicle's battery, for battery charge.
- CANbus line (standard J1939, option CANopen) is provided for backup cable communication.
- Standard battery charge cable with cigarette-lighter plug.
- Optional serial cable (CANbus + battery charge).
- Vibration and shock resistant.
- CE, FCC, IC certifications available.
- Shoulder strap provided as standard.



>> ORDERING INFORMATION: see page 3



SPECIFICATIONS

- Operating voltage (internal battery): 4.7 ÷ 6 VDC
- Operating voltage (serial cable): 8 ÷ 32 Vdc
- Max current consumption: 200 mA
- Operating temperature: -40 ÷ +85°C
- Operating Frequency Band: 2402 ÷ 2480 MHz
- Transmission type: BT 2.1 + EDR
- Antenna: Built-in (internal)
- Diagnostics: 1 LED for the controller's status (more LEDs available as option)
- CANbus physical layer: ISO 11898
- CANbus protocol: J1939 (standard) - CANopen (option)
- Connector type: IT connector, 4 poles female
- Housing material: Polycarbonate
- Weight: < 1Kg (4F)
- Environmental protection: IP 65

WARNING: the specifications/application data shown in our catalogs and data sheets are intended only as a general guide for the product described (herein). Any specific application should not be undertaken without independent study, evaluation, and testing for suitability.

RC-PCT-6F 6-Functions PCT Radio Transmitter

DESCRIPTION

Compact multi-function shoulder strap radio remote controller, for use with Tecnord RC-TRL radio receivers / transceivers. Six proportional paddle levers (JLP type) and toggle switches for auxiliary functions.

RC-PCT radio remote controller is designed to allow remote operation of machines. It is best suited for machines equipped with a CAN-based control system.

Its multi-function structure allows simultaneous operation of all the available functions.

RC-PCT-6F Standard Controller is equipped with 6 proportional paddle levers, for larger machines (Tecnord JLP type). Additional operators are available for radio enable, reduced speed selection and auxiliary functions.

A STOP pushbutton is available to immediately stop the machine in case of hazard.

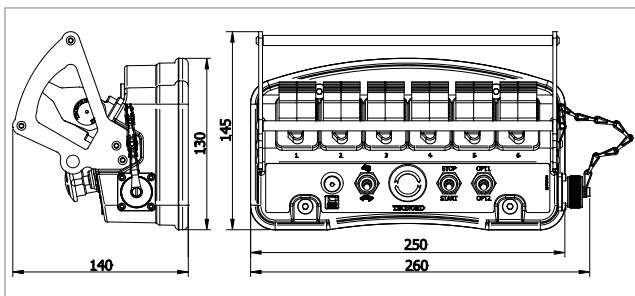
Battery and battery charger are internal; a connector is provided for battery charging and backup cable communication.

The transmission technology used allows high immunity to interference and long operating range. Co-existence between multiple RC-PCT units is also allowed.

A unique code allows the RC-PCT controller to operate only with its coupled radio receiver.

FEATURES

- Battery power supply: NiMH rechargeable cells.
- Cable power supply: from vehicle's battery, for battery charge.
- CANbus line (standard J1939, option CANopen) is provided for backup cable communication.
- Standard battery charge cable with cigarette-lighter plug.
- Optional serial cable (CANbus + battery charge).
- Vibration and shock resistant.
- CE, FCC, IC certifications available.
- Shoulder strap provided as standard.



>> **ORDERING INFORMATION:** see page 3



SPECIFICATIONS

- Operating voltage (internal battery): 4.7 ÷ 6 VDC
- Operating voltage (serial cable): 8 ÷ 32 VDC
- Max current consumption: 200 mA
- Operating temperature: -40 ÷ +85°C
- Operating Frequency Band: 2402 ÷ 2480 MHz
- Transmission type: BT 2.1 + EDR
- Antenna: Built-in (internal)
- Diagnostics: 1 LED for the controller's status (more LEDs available as option)
- CANbus physical layer: ISO 11898
- CANbus protocol: J1939 (standard) - CANopen (option)
- Connector type: IT connector, 4 poles female
- Housing material: Polycarbonate
- Weight: < 1.2Kg (6F)
- Environmental protection: IP 65

WARNING: the specifications/application data shown in our catalogs and data sheets are intended only as a general guide for the product described (herein). Any specific application should not be undertaken without independent study, evaluation, and testing for suitability.

RC-SHW_F 4/6 Functions meter-IN SHW Radio Transmitter

DESCRIPTION

Single-hand radio controller (transmitter/transceiver) with CANbus interface. For use with Tecnord RX-CAN radio receivers or as stand-alone controller for CANbus based systems. RC-SHW_F radio controller is designed to allow radio remote operation of machines equipped with a CAN-based control system. Its compact and ergonomic design allows easy operation: with a single hand all operators, on-off and proportional, are available. RC-SHW_F standard configuration includes 4 or 6 toggle switches for on-off selection of the function(s) and one proportional trigger for proportional speed control. Additional operators are available for radio enable and auxiliary functions. A STOP push button is available to immediately stop the machine in case of hazard. Battery and battery charger are internal; a connector is provided for battery charging and backup cable communication. The transmission technology used allows high immunity to interference and long operating range. Co-existence between multiple radio units is also allowed. A unique code allows the RC-SHW_F controller to operate only with its coupled radio receiver. Standard cable communication protocols include CANopen and J1939. Customized protocols are available for OEMs.

FEATURES

- Standard power supply from internal battery pack (rechargeable)
- Power supply line from the cable is protected against reversed polarity and overvoltage
- CANbus line is protected against short circuits to GND and supply
- Microprocessor based
- Robust plastic enclosure.
- CE, FCC, IC certifications available
- Electro Magnetic Compatibility (EMC): EN 61000-6-2 (Immunity)
EN 61000-6-3 (Emissions)

SPECIFICATIONS

- | | |
|---|--|
| • Operating voltage (internal battery): | 4.7 ÷ 6 VDC |
| • Operating voltage (serial cable): | 8 ÷ 32 VDC |
| • Max current consumption: | 250 mA |
| • Operating temperature: | -40 ÷ +85°C |
| • Operating Frequency Band: | 2402 ÷ 2480 MHz |
| • Transmission type: | BT 2.1 + EDR |
| • Antenna: | Built-in (internal) |
| • Diagnostics: | 1 LED for the controller's status
(more LEDs available as option)
1 buzzer |
| • CANbus physical layer: | ISO 11898 |
| • CANbus protocol: | J1939 (standard) - CANopen (option) |
| • Connector type: | M12, 4 pins |
-
- | | |
|-----------------------------|--|
| • Housing material: | thermoplastic POM
(different colours available) |
| • Weight: | < 1Kg (4F) |
| • Environmental protection: | IP 65 |

>> **ORDERING INFORMATION:** see page 3

WARNING: the specifications/application data shown in our catalogs and data sheets are intended only as a general guide for the product described (herein). Any specific application should not be undertaken without independent study, evaluation, and testing for suitability.



DIMENSIONS



APPLICATIONS

- Remote control of aerial platforms, telehandlers, agricultural machines and lift equipment equipped with CANbus systems
- Stand-alone CANbus controller in both 12 VDC and 24 VDC systems

RX-CAN CANbus Radio Receiver

DESCRIPTION

Compact radio receiver / transceiver with CANbus interface.
For use with Tecnord single-hand or multifunction Radio Transmitters

OPERATION

RX-CAN radio transceiver is designed to allow radio remote operation of machines equipped with a CAN-based control system. Its compact and rugged design allows easy installation, even in weather-exposed locations on the machine. Standard communication protocols include CANopen and J1939. Customized protocols are available for OEMs. Each Tecnord Radio is produced with a unique identifier (System ID). In case of lost Transmitter, a simple self-learning procedure allows to match a new spare transmitter. The transmission technology used allows high immunity to interference and long operating range. Co-existence between multiple units is also allowed. A unique code allows the RX-CAN transceiver controller to operate only with its coupled radio transmitter.

FEATURES

- Supply line is protected against reversed polarity and overvoltage.
- CANbus line is protected against short circuits to GND and supply.
- Microprocessor based.
- Vibration and shock resistant.
- Easy installation with 4 screws (option: magnet).
- CE, FCC, IC certifications available
- Electro Magnetic Compatibility (EMC): EN 61000-6-2 (Immunity)
EN 61000-6-3 (Emissions)

SPECIFICATIONS

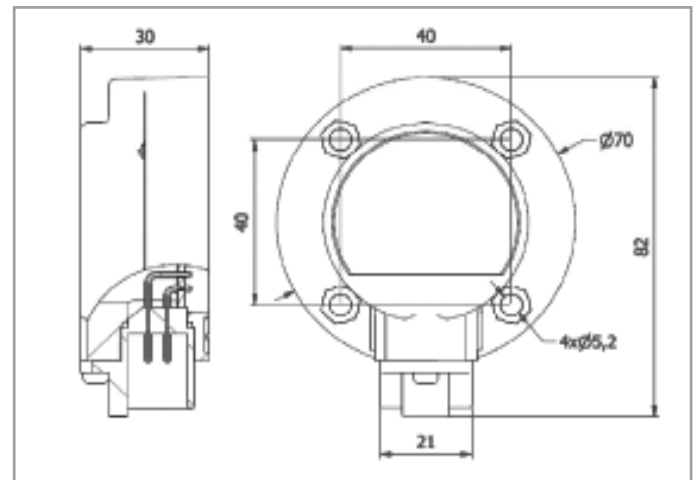
• Operating voltage:	6.5 ÷ 30 VDC
• Max current consumption:	200 mA
• Operating temperature:	-40 ÷ +85°C
• Environmental protection:	IP 68
• Operating Frequency Band:	2402 ÷ 2480 MHz
• Transmission type:	BT 2.1 + EDR
• Antenna:	Built-in (internal)
• Diagnostics:	1 LED for the radio link status 1 LED for the CANbus status
• CANbus physical layer:	ISO 11898
• CANbus protocol:	J1939 (standard) - CANopen (option)
• Connector type:	Deutsch DT04-4P
• Fixing screws included:	4 - M4x20

APPLICATIONS

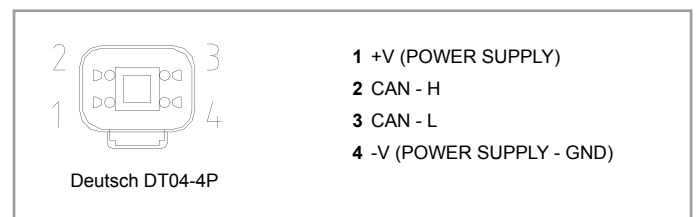
- 12 Vdc and 24 Vdc systems.
- Remote control of aerial platforms, telehandlers, agricultural machines and lift equipment equipped with CANbus systems.



DIMENSIONS



CONNECTIONS

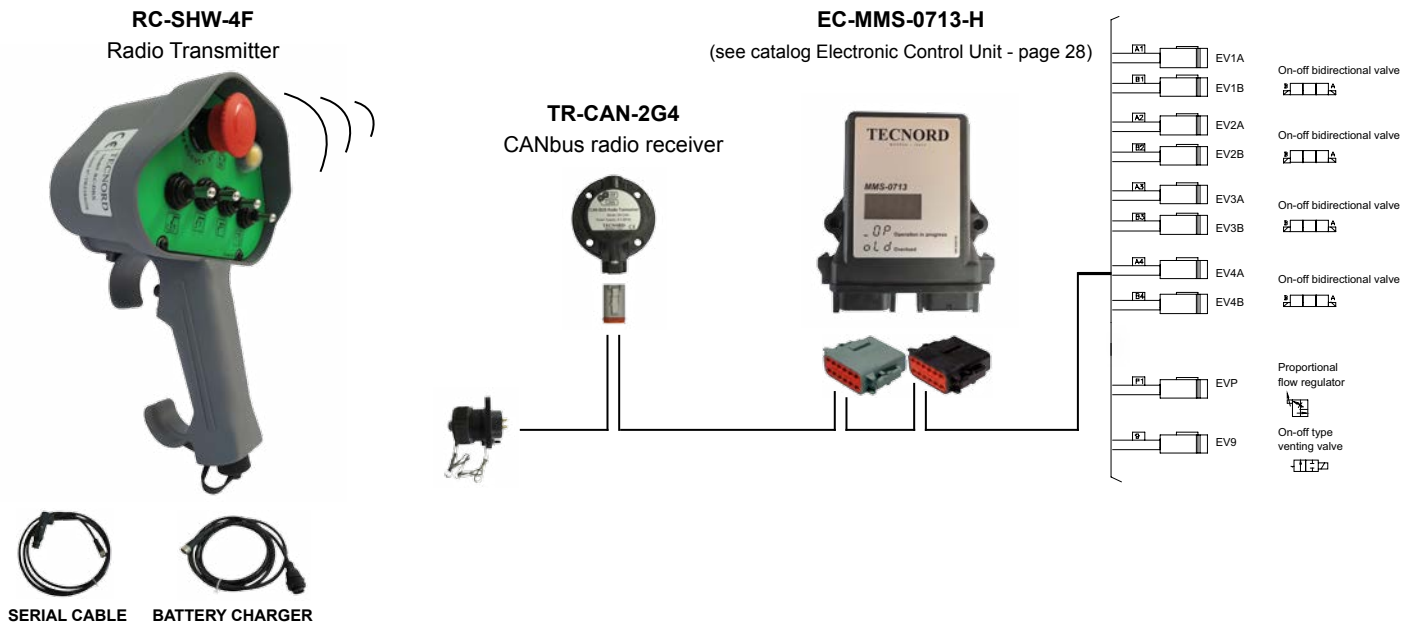


>> **ORDERING INFORMATION:** see page 3

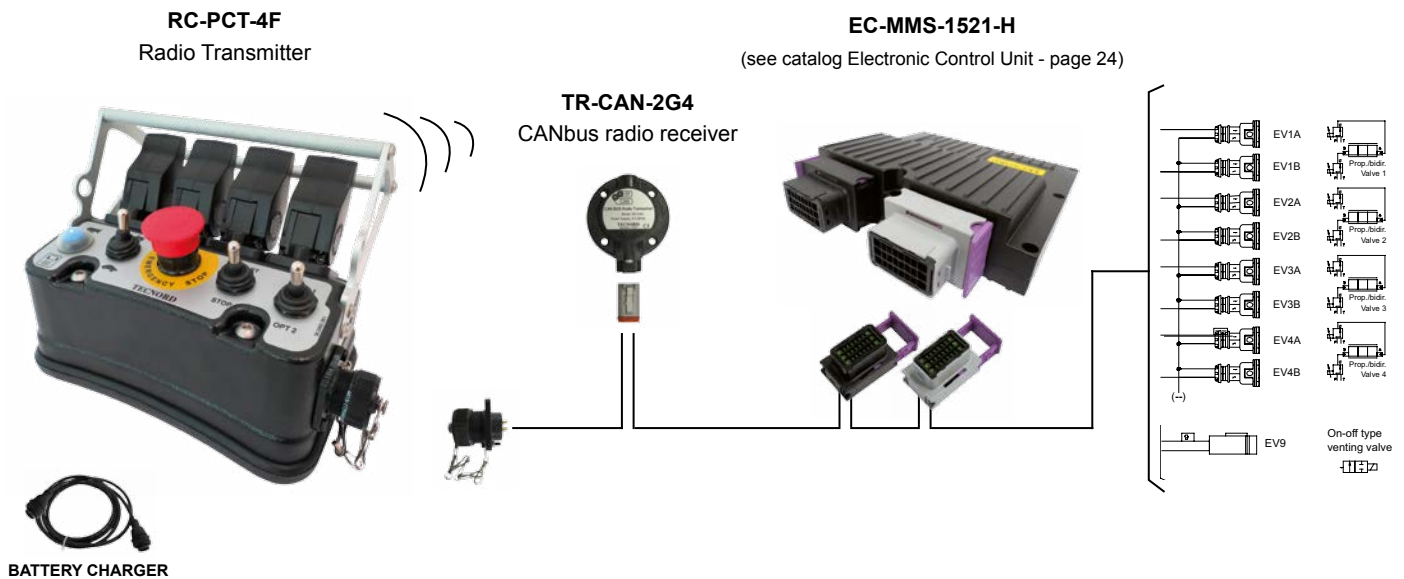
WARNING: the specifications/application data shown in our catalogs and data sheets are intended only as a general guide for the product described (herein). Any specific application should not be undertaken without independent study, evaluation, and testing for suitability.

APPLICATION EXAMPLE

Model: RC-SHW-4F/TCN-CAR2M-SER2M-H2MT



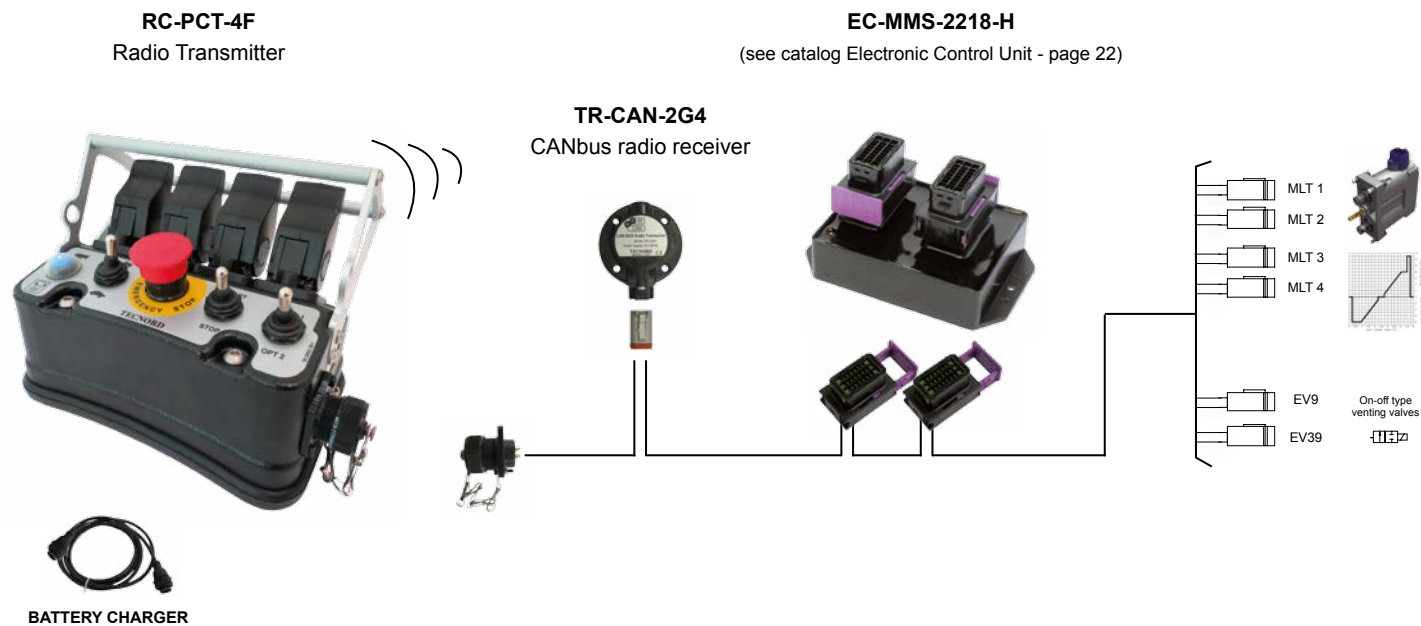
Model: RC-PCT-4F/PWM-CAR2M-00000-H2MT



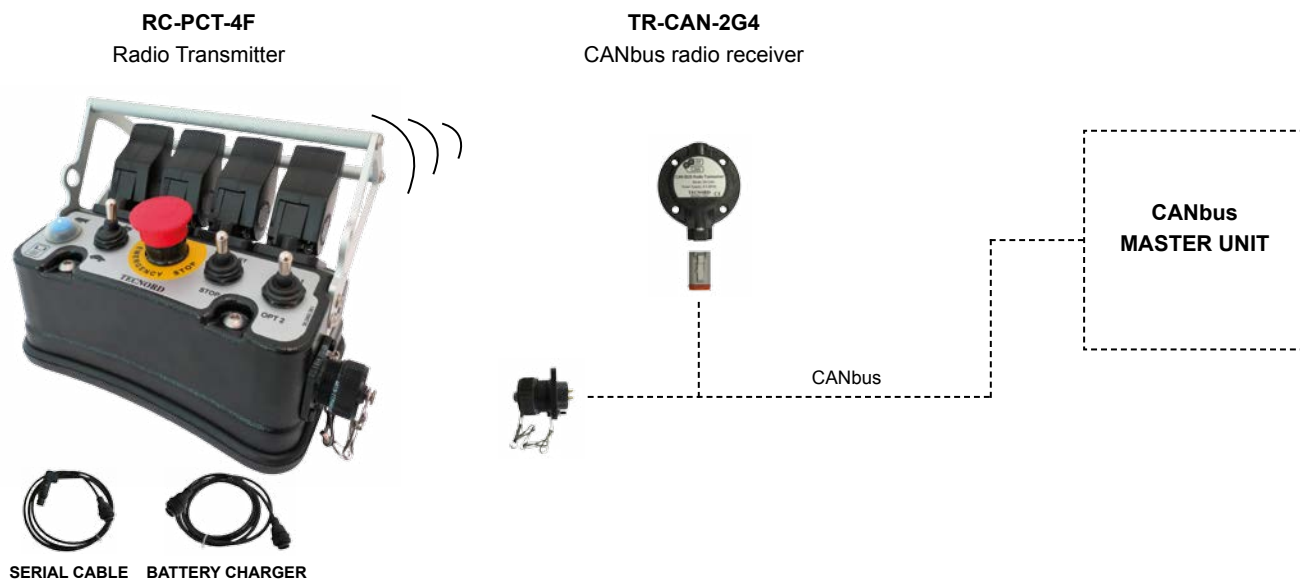
WARNING: the specifications/application data shown in our catalogs and data sheets are intended only as a general guide for the product described (herein). Any specific application should not be undertaken without independent study, evaluation, and testing for suitability.

APPLICATION EXAMPLE

Model: RC-PCT-4F/MLT-CAR2M-00000-H2MT



Model: RC-PCT-4F/CAN-CAR2M-SER2M-H000



WARNING: the specifications/application data shown in our catalogs and data sheets are intended only as a general guide for the product described (herein). Any specific application should not be undertaken without independent study, evaluation, and testing for suitability.

Serial and Battery Charger Cables Accessories

BATTERY CHARGER CABLE M12

Kit includes: 12-24 VDC Battery charger cable - M12 - 2 meters
Available for SHW Transmitter

ORDERING CODE: 22.0611.119

Alternate-current battery charger unit (110-220 VAC) available on request



BATTERY CHARGER CABLE IT4

Kit includes: 12-24 VDC Battery charger cable - IT4 - 2 meters
Available for PCT Transmitter

ORDERING CODE: 22.0611.044

Alternate-current battery charger unit (110-220 VAC) available on request



SERIAL AND BATTERY CHARGER CABLE IT4/M12

Kit includes: Serial and Battery charger cable IT4/M12 - 2 meters
Available for SHW Transmitter

ORDERING CODE: 22.0611.114

Different cable length available on request



SERIAL AND BATTERY CHARGER CABLE IT4/IT4

Kit includes: Serial and Battery charger cable IT4/IT4 - 2 meters
Available for PCT Transmitter

ORDERING CODE: 22.0611.104

Different cable length available on request



WARNING: the specifications/application data shown in our catalogs and data sheets are intended only as a general guide for the product described (herein). Any specific application should not be undertaken without independent study, evaluation, and testing for suitability.

Connector kit Accessories

4 POLES DEUTSCH DT06-4S

Kit includes: male connector, female contacts, secondary lock and fillers

Available for Radio receiver: RX-CAN

ORDERING CODE: 13.0310.132



12 POLES "DEUTSCH DTM06-12SA & DTM06-12SB"

Kit includes: male connector, female contacts,

secondary lock and fillers

Available for electronic control unit: EC-MMS-0713-H

ORDERING CODE: 13.0310.253



24 POLES SICMA BLACK COLOR

Kit includes: male connector, female contacts, locking cum, fillers

Available for electronic control unit: EC-MMS-2218-H; EC-MMS-1521-H

ORDERING CODE: 13.0310.150



24 POLES SICMA GREY COLOR

Kit includes: male connector, female contacts, locking cum, fillers

Available for electronic control unit: EC-MMS-1521-H

ORDERING CODE: 13.0310.634



HARNESS - IT4 SERIAL FEMALE CONNECTOR AND PLUG

IT4 female connector **ORDERING CODE: 50.1005.118**

IT4 Plug with chain **ORDERING CODE: 50.1005.116**



WARNING: the specifications/application data shown in our catalogs and data sheets are intended only as a general guide for the product described (herein). Any specific application should not be undertaken without independent study, evaluation, and testing for suitability.